

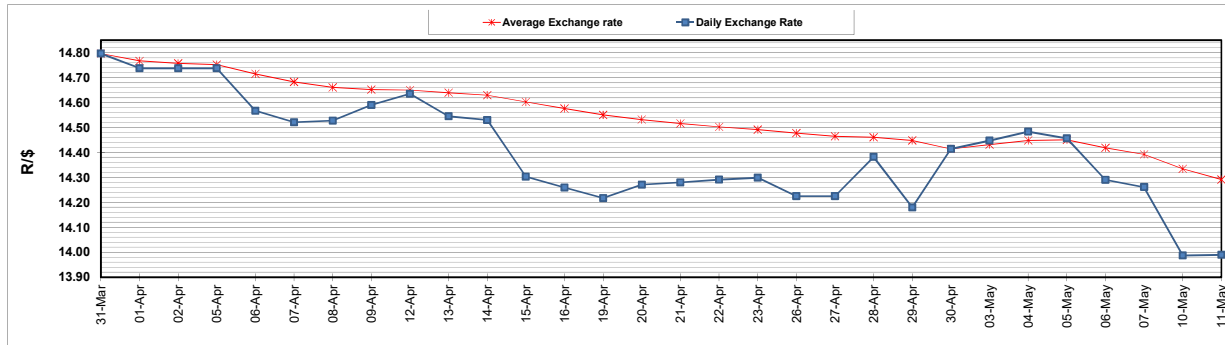
	PETROL 95 ULP	PETROL 93 ULP & LRP	DIESEL 0.05%	DIESEL 0.005%	ILL. PAR.
GAUTENG PUMP PRICE (SA c/l) AS FROM 05/05/2021	1,723.000	1,701.000	-	-	-
WHOLESALE PRICE (SA c/l) AS FROM 05/05/2021	-	-	1,446.620	1,450.020	857.488
SINGLE NATIONAL MAXIMUM RETAIL PRICE	-	-	-	-	1,076.000
BASIC FUEL PRICE - 11/05/2021 (SA c/l)	712.138	703.072	678.118	681.432	665.417
PRESS RELEASE CONTRIBUTION TO BFP 05/05/2021 - 11/05/2021 (SA c/l)	727.170	715.170	659.630	663.030	644.128
UNIT OVER/(UNDER) RECOVERY - 11/05/2021 (SA c/l)	15.032	12.098	(18.488)	(18.402)	(21.289)
AVERAGE BASIC FUEL PRICE 30/04/2021 - 11/05/2021	733.720	722.261	687.156	691.223	676.613
AVERAGE UNIT OVER/(UNDER) RECOVERY 30/04/2021 - 11/05/2021	(3.175)	(3.716)	(15.901)	(16.943)	(23.860)

### ANALYSIS MOVEMENT OF AVERAGE OVER/(UNDER) RECOVERY

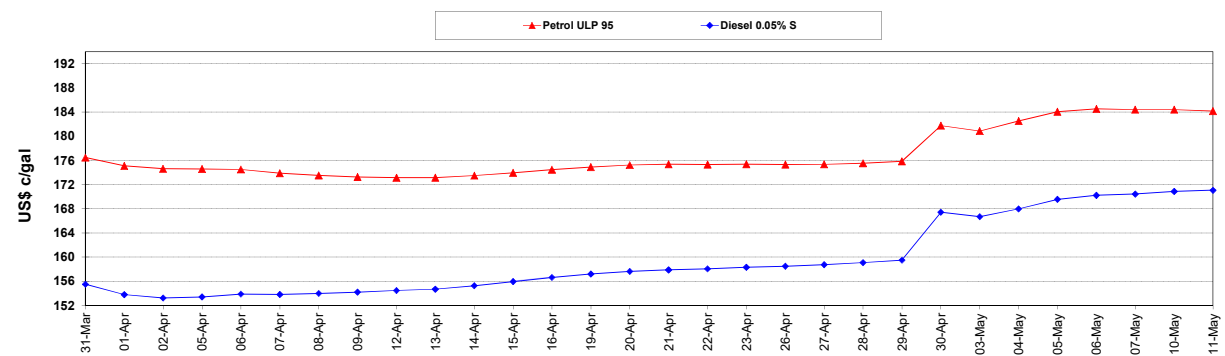
	PETROL 95	PETROL 93	DIESEL 0.05%	DIESEL 0.005%	ILL. PAR.
- MOVEMENT IN INTERNATIONAL PRODUCT PRICES	(11.220)	(11.635)	(23.435)	(24.522)	(31.279)
- MOVEMENT IN EXCHANGE RATE	8.045	7.919	7.534	7.579	7.419
AVERAGE UNIT OVER/(UNDER) RECOVERY 30/04/2021 - 11/05/2021	(3.175)	(3.716)	(15.901)	(16.943)	(23.860)

### R/\$ EXCHANGE RATE - (R/\$13.9900- 11/05/2021)

#### EXCHANGE RATE USED IN BASIC FUEL PRICE



#### INTERNATIONAL PRODUCT PRICES OF BASKET USED IN BASIC FUEL PRICE



#### BASIC FUEL PRICE IN SA CENTS PER LITRE

